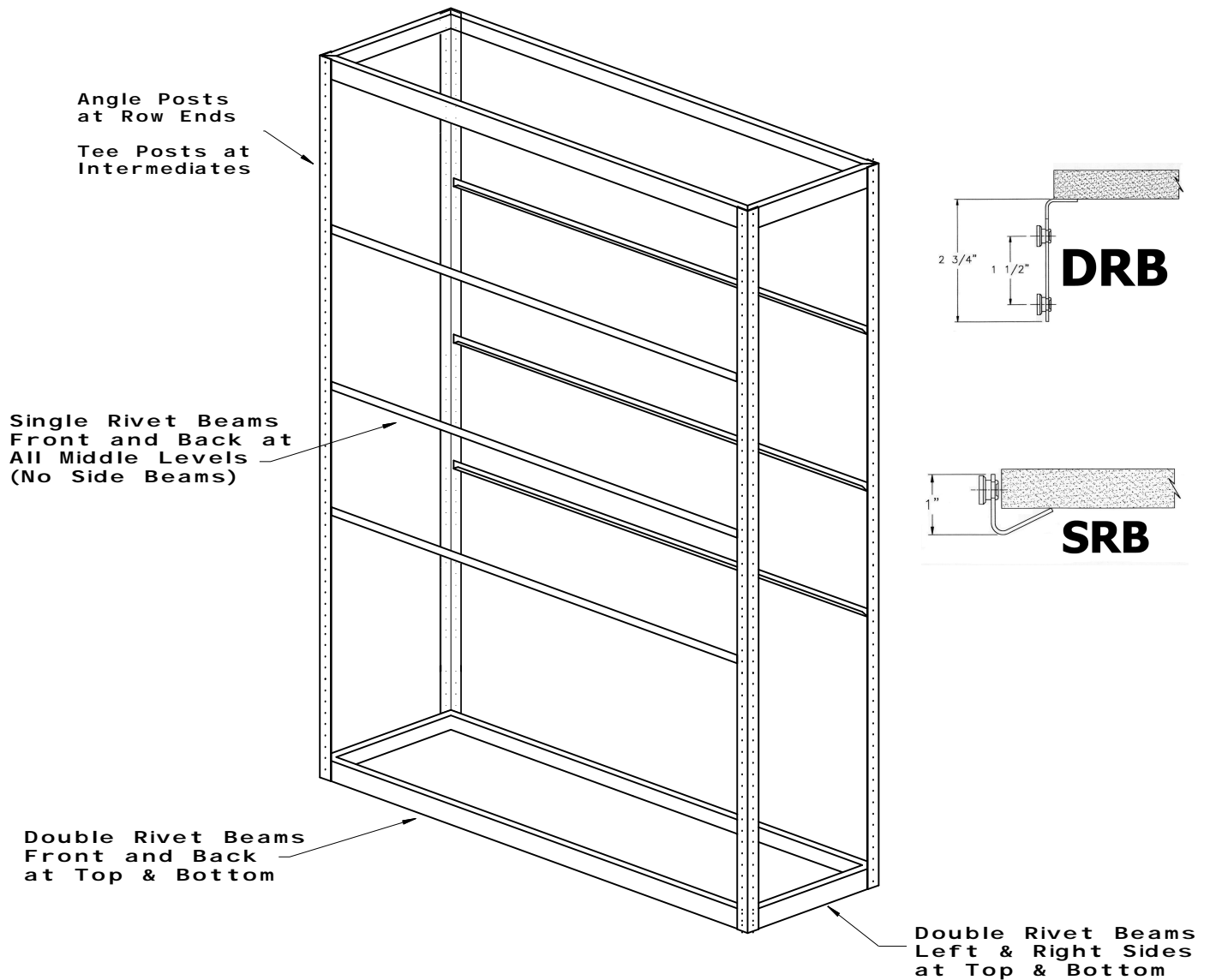


SPACE SAVER RIVET RACK ASSEMBLY INSTRUCTIONS



READ BASIC RIVET RACK ASSEMBLY INSTRUCTIONS BEFORE ASSEMBLING

1. Construct Side Upright Frames - Install Side Double Rivet Beams to Angle Posts, at Top and Bottom locations ONLY. With Tee Posts for Middle Sections, install Side Beams on Both Sides of Tee Post
2. Install Front & Rear Double Rivet Beams to Side Upright Frames. Install Double Rivet Beams at Top & Bottom Locations ONLY
3. Install Front & Back Single Rivet Beams for all Middle Levels. Side Beams are NOT used for Single Rivet Beam Middle Levels.
NOTE: Single Rivet Beams install 'Hook Up', Like the letter "J".
4. Drop Wood Decking into place, working from bottom to top.